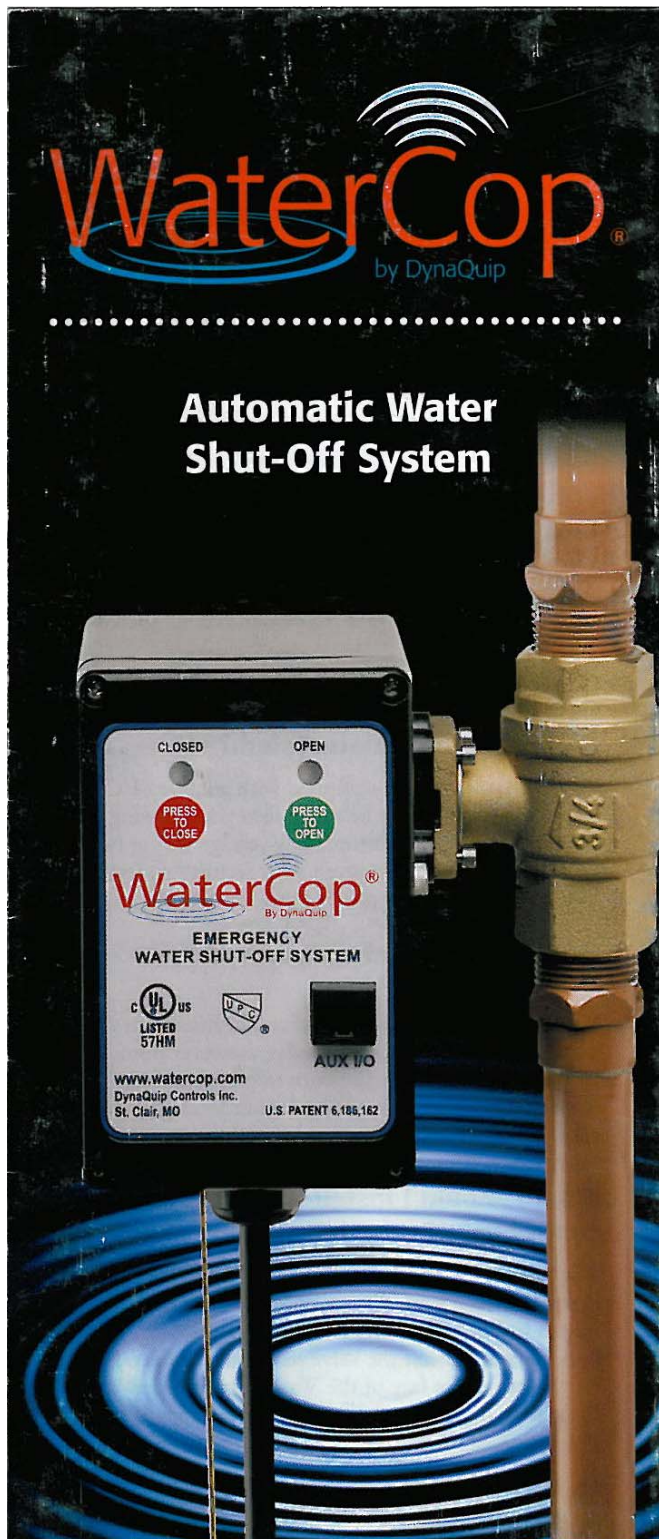


WaterCop® Automatic Water Shut-Off System



Stop water damage before it starts!

An effective way to help protect your home from costly water damage.

Flooding and water damage caused by aging, faulty and defective plumbing and appliances costs homeowners billions of dollars each year. Washing machine hoses split, pipes freeze and burst, dishwashers leak, toilets overflow, and water heaters fail—all resulting in needless expensive property damage. Often the property that is damaged is difficult or impossible to replace such as artwork, antique furniture, computer data, old photographs, and more. Homeowner's insurance helps defray some of the cost of losses and repairs, but can not prevent loss or damage to your valued property. It happens every day, so why leave your home unprotected?

The patented WaterCop system, designed and manufactured by DynaQuip Controls, a leader in industrial valve automation, helps to effectively reduce the damage caused by common plumbing related failures.



In most cases, installation of the WaterCop system can help limit the chances of catastrophic water damage for a fraction of the cost of most insurance deductibles.

.....
Recommended by major insurance companies for added property protection for any home with running water; including primary and vacation homes, condominiums, and high-rise apartments.
.....

Installation of the WaterCop system as added protection against clean water flooding can significantly and effectively reduce the chances of property damage and may even help you to qualify for discounts on your home insurance premiums. Please be sure to ask your insurance agent or underwriting professional if you qualify for a discount.

How does the WaterCop system work?

WaterCop is an automatic water shut-off system. The system consists of an automatic valve and a network of flood and temperature sensors. Flood sensors actively monitor predetermined and specific leak prone areas within your home and notify the WaterCop automatic valve when accumulating water is detected.

The WaterCop automatic valve installs on your main water supply line near where it enters the home and will automatically turn off the water when activated. The WaterCop system can be activated by its sensor network, a remote soft touch switch (RS100), or most security or home automation systems via an auxiliary input/output contact. Our RS100 Water Control Wall Switch makes it possible to control your water supply at the touch of a button from any convenient location within your home.



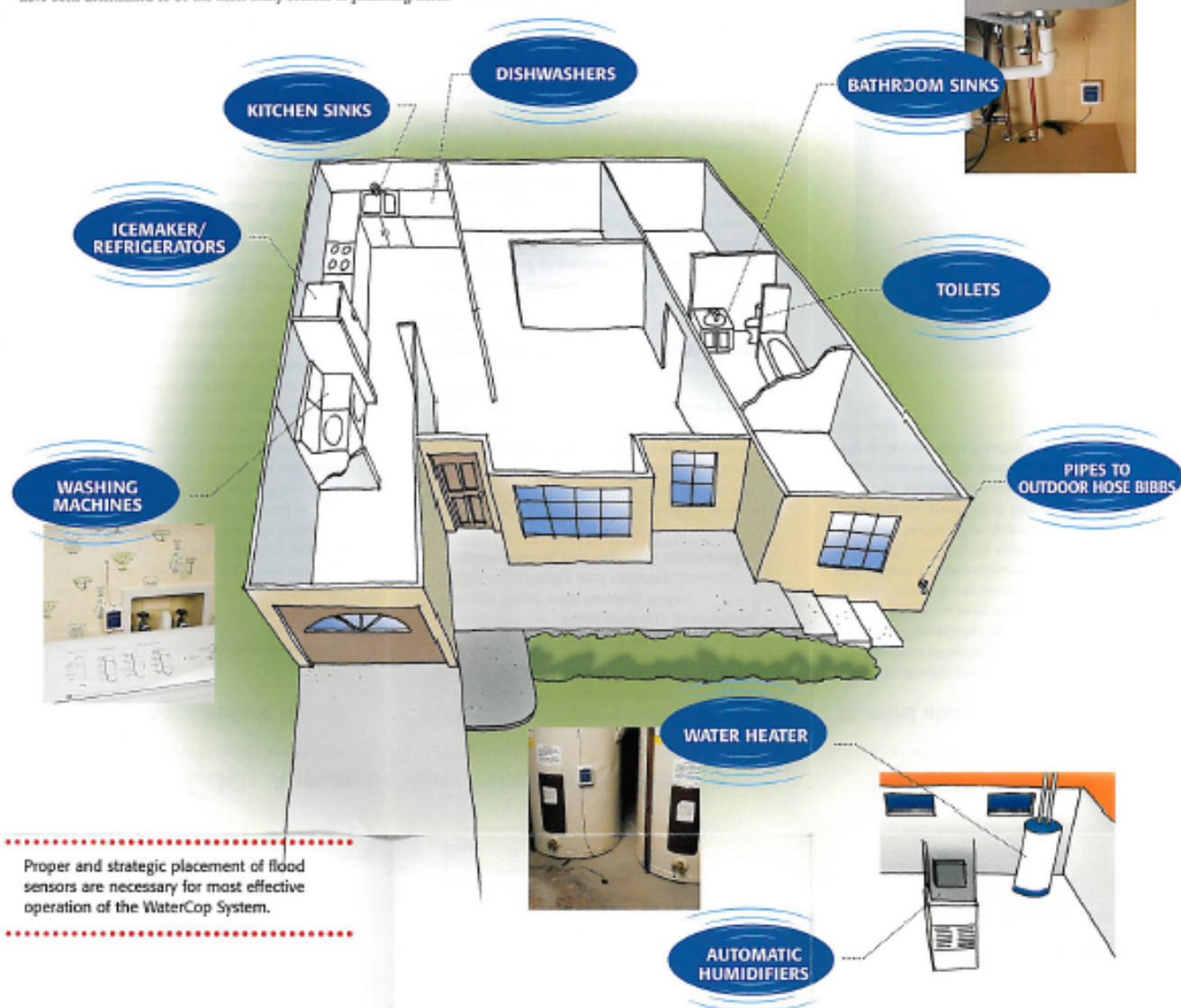
Worried about pipes freezing?

WaterCop temperature sensors keep a close watch on your plumbing for you. They monitor the temperature of a specific pipe, such as one leading to an outdoor sillcock or sprinkler system or one located in an exterior wall. When the temperature of the pipe drops below 38°F (+/- 2°F), the sensor will alert the WaterCop to shut off the water supply, preventing the possibility of flooding from a burst pipe. Although this system cannot protect a pipe from eventually freezing, WaterCop will help reduce extensive flooding if a pipe eventually bursts.



Where do I place the Flood Sensors?

Through extensive research of plumbing related water damage cases, we have compiled a brief list of areas in your home that have been determined to be the most likely sources of plumbing leaks.



WaterCop FAQ's

Does WaterCop help me qualify for a discount on my homeowner's insurance premiums?

Protecting your home from possible flooding increases your insurability. Contact your insurance agent directly to see if they offer discounts for emergency water shut-off systems or security system enhancements such as the WaterCop system.

Can the WaterCop work with my security or home automation system?

WaterCop systems are equipped with auxiliary I/O contacts and can easily be wired into your existing home security network with simple low voltage wiring (wiring not included). Please consult your security system manual or installation professional for details.

Do I need a plumber to install the WaterCop system?

We recommend that a certified and licensed plumber install the WaterCop control valve; however homeowners with a high level of competence in plumbing may be able to do it themselves. Please check your local plumbing codes for specific information.

Where should I install the WaterCop control valve?

The WaterCop control valve should be installed on the main incoming water line upstream from where the system begins to branch off to other appliances. It is also important to mount the valve so that the homeowner has easy access to the face of the WaterCop in order to reset the system in the event that it has been tripped.

How many WaterCop Sensors can I use?

Each WaterCop system can support an unlimited number of flood and temperature sensors. Place sensors near or under washing machines, water heaters, ice-makers, dishwashers, humidifiers, sinks, toilets, and other areas that are most likely to be the source of water leaks.

How much water must be present for a Flood Sensor to sense the problem?

It literally only takes a few ounces of water to activate the system, assuming that the sensor is correctly placed in an advantageous location to detect leaks and puddling at the earliest possible moment.

How long will the batteries in my sensors last?

A pair of standard AA alkaline batteries should operate a single flood sensor for about one year, assuming that the system was never tripped by a leak. The sensor will sound a low battery warning for approximately five to seven days prior to the batteries going completely dead. A/C adapters are available.

What is the maximum range between the sensors and the WaterCop control valve?

The WaterCop system has a maximum transmission range of 200 feet. The effective working range may vary from home to home. WaterCop sensor repeaters are available to increase range if necessary.

Can the WaterCop system be installed outdoors?

The WaterCop control valve and sensors are designed to be installed indoors, in crawl spaces, basements, garages, attics, or other locations protected from the elements.

Connect WaterCop to your security system or home automation system

WaterCop can easily be integrated into today's most high tech homes for ease of use and total automation. Simply wire to our auxillary input/output contacts and the WaterCop can alert your security system or home automation system when a plumbing leak has been detected.

This can also allow you to control your WaterCop from a remote system giving you the flexibility to turn your water supply on or off from anywhere or at anytime.

System Highlights

- Protects your home 24 hours a day, seven days a week, home or away
- Battery operated, (AC optional) wireless sensors for easy and economical installation up to 200 ft. range
- Electrically operated full flow ball valve for quick, reliable closure and zero pressure drop
- Auxillary I/O to integrate with other home systems
- Available in 1/2", 3/4" and 1" valve sizes
- Added peace of mind
- No programming necessary
- Easy installation
- Complies with Uniform Plumbing Code (UPC)
- Three year limited warranty on all electronic parts
- Lifetime warranty on brass valve
- U.S. Patent

On average, every 34 seconds another home experiences clean water damage from leaking appliances and ruptured plumbing fixtures. Don't risk losing your insurability by becoming a statistic.

waterpro@vail.net